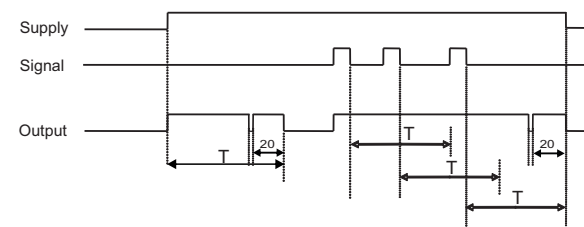


TECHNICAL SPECIFICATIONS:

Cat. No.:	27B2B3B2	27B2C3B2
SUPPLY CHARACTERISTICS:		
Nominal Supply (𐄂)	220-240 VAC	
Supply Variation	-15 % to +10 % of 𐄂	
Supply Frequency	50/60 Hz [+/- 3Hz]	
Power Consumption (Max.)	7 VA at 240 VAC	
RELAY O/P CHARACTERISTICS:		
Contact Arrangement	1 NO	
Contact Rating	16 A @ 240 VAC (Resistive)	
Contact Material	Ag Alloy	
Mechanical Life	1 x 10 ⁷ operations	
Electrical Life	50,000 operations @ rated load	
Incandescent Lamps	2600 W	
Halogen Lamps	2600 W	
LED Lamps <2W	30 W	
LED Lamps 2-8W	100 W	
FEATURE CHARACTERISTICS:		
Set Time (Ts)	0.5m, 2m, 4m, 6m, 9m, 15m, 20m	
Setting Accuracy	+/- 5% of full scale	
Repeat Accuracy	+/- 1%	
Initiate time	< 750 ms	
Reset time	< 500 ms	
Glow lamp load	100 mA	
Switch for permanent light	Sliding switch	
Run time change applicable	Upon new signal reapplies	
Pre-warning feature	Yes	NO
Mounting	Din Rail	
Dimensions (W X H X D)	18 x 90 x 65.90 (in mm)	
Weight (Unpacked)	63 gms.	
Humidity	95% max without condensation	
Operating Temperature	-25° C to 60° C	
Storage Temperature	-25° C to 70° C	
Enclosure	Flame retardant UL 94-V0	
Degree of Protection	IP:20 for terminal, IP:30 for Housing, IP:40 for front plate	
Pollution Degree	II	
Enclosure Color	Light Gray	
Certifications	CE and RoHS	
Product Reference standard	IEC 60669	
EMI / EMC:		
Harmonic Current Emissions	IEC 61000-3-2 Class A	
ESD	IEC 61000-4-2 AD:8 kv, CD:4 kv	
Radiated Susceptibility	IEC 61000-4-3 Level III	
Electrical Fast Transient (Supply)	IEC 61000-4-4 Level IV	
Electrical Fast Transient (Signal)	IEC 61000-4-4 Level III	
Surge between supply terminals	IEC 61000-4-5 Level III	
Conducted Susceptibility	IEC 61000-4-6 Level III	
Voltage Dips & Interruptions (AC)	IEC 61000-4-11	
Conducted Emission	CISPR 15	Class B
Radiated Emission	CISPR 15	Class B
SAFETY:		
Test Voltage between all terminals and enclosure	IEC 60947-5-1 Level 2.5 kv	
Single Fault	IEC 61010-1	
Insulation Resistance	UL 508	>50 M 𐄂
Leakage Current	UL 508	<3 mA
ENVIRONMENTAL:		
Cold Heat	IEC 60068-2-1	
Dry Heat	IEC 60068-2-2	
Vibration	IEC 60068-2-6	

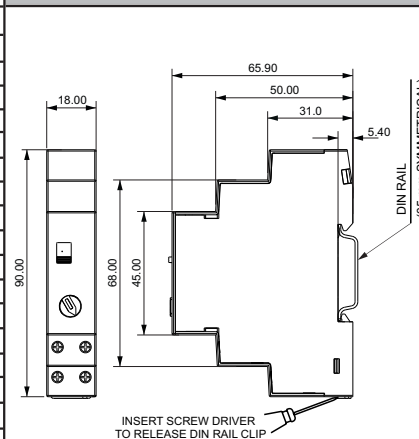
MODE DESCRIPTION

At power on output is switched ON and timing starts as per the set duration. Subsequent signals during this period will extend the time duration by the set time on the timer during run time. 20 sec before the completion of the set time duration, output blinks once for 0.5 sec, as a pre-warning. After the completion of set time duration Relay is switched OFF.



Note: For 27B2C3B2 cat id. pre-warning feature is not applicable.

OVERALL DIMENSIONS



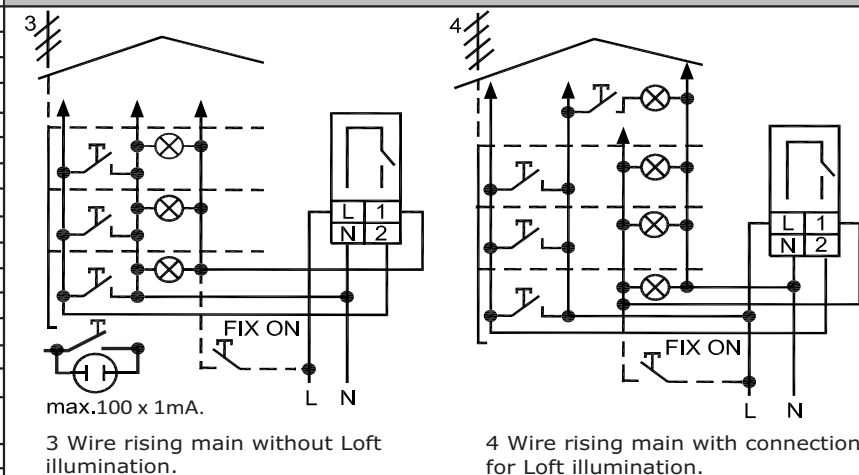
TERMINAL DETAILS

	0.4 N.m (3.6 Lb.in)
	1 x 2.5 mm ² Solid / Stranded Wire
AWG	1 x 24 to 12

Use Cu wire of 75°C only.

AWG	Sq.mm.	Max. Current (A)
12	2.5	16
14	2.0	15
16	1.5	10
18	1.0	7
20	0.75	5
22	0.5	3
24	0.2	2

CONNECTION DIAGRAM



E-Waste Regulatory notice

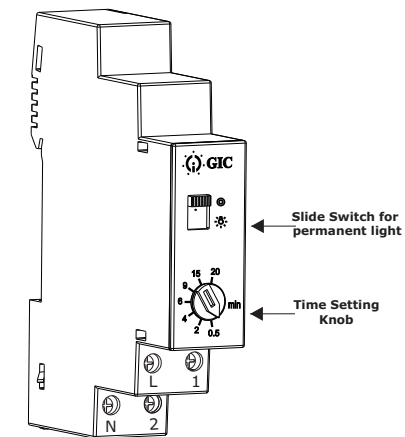
Kindly treat, recycle or dispose of this equipment in an environmentally sound manner after End of Life, as per WEEE (Waste Electrical and Electronic Equipment) regulations or as per local norms; or hand it over to General Industrial Controls Pvt. Ltd, through website <https://www.gicindia.com/get-in-touch/>

ELECTRONIC TIMER - SERIES STAIRCASE

Cat. No.: 27B2B3B2, 27B2C3B2



The staircase timer is used to control lighting devices in staircases and corridors. When the switch is pressed, the lights are switched ON for the time period that has been set, after which they are switched OFF automatically. The time period of operation can be varied from 30s to 20 min with the help of the knob on the front facia of the timer. The Pre-Warning feature alerts the user well in advance before the lights are switched OFF. The push buttons along with the glow-lamps (load up to 100mA) connected to the control input allows the device to be re-triggered. The product can be connected in 3 wire or 4 wire applications.



FEATURES

- Slide switch for permanent light
- ZCD assistance for inrush current management and for better relay & load life.
- Functions with pre-warning
- Time extension using re-trigger
- Switch indications (glow-lamps/pilot lamps):100 mA
- 3 wire & 4 wire configurations
- Time Range: 0.5min - 20min
- Complied with IEC 60669

CAUTION

1. Always follow instructions stated in this product leaflet.
2. Before installation, ensure that the specifications agree with the intended application
3. Installation to be done by skilled electrician.
4. Automation & Control devices must be properly installed so that they are protected against any risk of involuntary actuations.
5. Suitable dampers should be provided in case of excessive vibrations.
6. Setting of all potentiometers must be in clockwise direction only.
7. The timers shall be placed in an enclosure that is minimum 200% of the size of the timer in the end use application.